

Global Partnership on Marine Litter



Presented by:

Heidi Savelli, Programme Officer

Global Programme of Action for the Protection of the Marine Environment from Land-based Activities

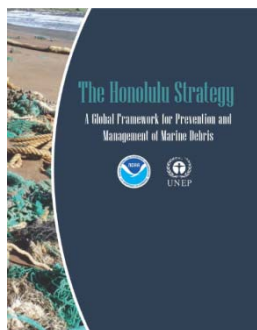
Freshwater and Marine Ecosystems Branch, United Nations Environment Programme



Background to the GPML

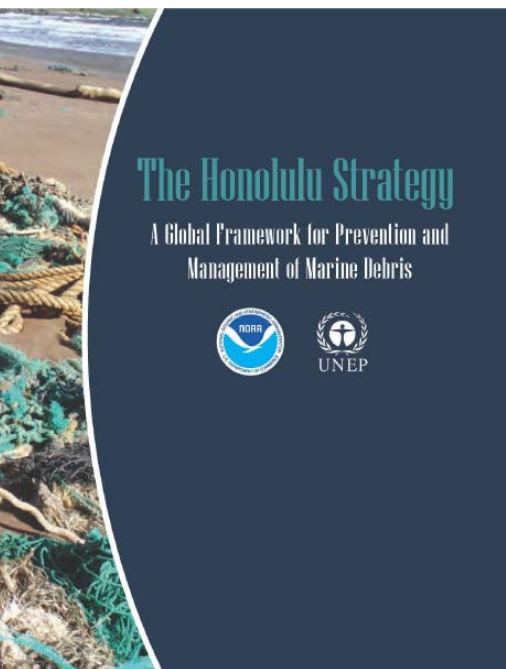


INTERNATIONAL
MARINE DEBRIS CONFERENCE



- UNEP Global Initiative on Marine Litter since 2003
 - Regional Assessments and action plans -> Global Overview
 - Monitoring guidelines, ALDFG, market-based instruments
- Fifth International Marine Debris Conference, 2011 (UNEP & NOAA)
 - Honolulu Commitment & development of Honolulu Strategy
- Manila Declaration on Furthering the GPA , 2012 (64 Gov. and the EC)
 - Establishment of a multi-stakeholder Global Partnership on Marine Litter (Rio +20)
 - Guided by HS (focal areas); feeding into GP on Waste Management

Honolulu Strategy – A global framework for prevention and management of marine debris



- **Framework which includes basic principles** that can be used all over the world, regardless of specific conditions or challenges.
- **Does not supplant or supersede existing activities**, rather it provides a **focal point for improved collaboration and coordination** amongst stakeholders.
 - **Planning tool; Common frame of reference** for collaboration and sharing of best practices and lessons learned;
 - **Monitoring tool** to measure progress across multiple programs and projects.

Global Partnership on Marine Litter

- To address the **ecological, human health, and economic impacts** of marine litter worldwide.
- To **enhance international cooperation and coordination** through the promotion and implementation of the HS & the HC.
- To **promote knowledge management**, information sharing and monitoring of progress on the implementation of the HS.
- To **promote resource efficiency** and economic development through waste prevention (e.g. 4Rs) and by recovering valuable material and/or energy from waste.
- To **increase awareness** on marine litter sources, fate and impacts.
- To **assess emerging issues** related to the fate and potential influence of marine litter, such as (micro) plastics & associated transfer of pollutants.



GPML focal areas

- A: Reduced levels and impacts of land-based litter and solid waste introduced into the aquatic environment;
- B: Reduced levels and impact of sea-based sources of marine debris including solid waste, lost cargo, ALDFG, and abandoned vessels introduced into the aquatic environment;
- C: Reduced levels and impacts of (accumulated) marine debris on shorelines, aquatic habitats, and biodiversity.

Other focal areas may be added in future.



Levels of Participation – forum and partnership



Future plans

-2013	2014-2018	2019-2025
Strengthen institutional capacity of GPML	GPML Workplans	Work towards globally recognition as the means through which global and regional multi-stakeholder activities are facilitated. Rio + 20
Online Marine Litter Network	Rio + 20 # 163: Considerable reduction by 2025	
Facilitate regional/national networking	Decentralization of GPML	
ID demo projects	Implement Honolulu Strategy & evaluate progress	
First Global Partnership Forum October 2013	Implement demo projects	
	Community of practice	

What is the role of the Regional/national nodes/fora?



- Bring regional expertise, network, cater for region specific situations?
 - LBS: Regional Seas Conventions and Action Plans, National focal points, partner organizations
 - SBS: Regional Fisheries Bodies
 - Recovery/removal : local and central government authorities
- Key stakeholders to engage?
- Networks to consider?

What are our roles?



- UNEP Secretariat for GPML and online forum;
 - LBS: GPA, Regional Seas / SBS: FAO, IMO, etc.
 - Crosscutting: UNESCO-IOC, MEAs etc.
 - Coordinate with relevant initiatives s.a. Global Partnership on Waste Management, GP on Oceans, CMS, CBD, etc.
- Members: financial, in-kind, technical expertise – shape the GPML
- Second Global Conference on Land-Ocean Connections, First GPML Partnership Forum (2-4 October 2013, Montego Bay, Jamaica)



gpml@unep.org / www.gpa.unep.org

Marine Litter Workplan LBS

- GPA mandate: Reduced amount of land-based litter and solid waste introduced into the marine environment
 - Intergovernmental platform: IGR-4 2016
 - Coordinate with other relevant global platforms on LBS e.g. GPWM; Regional Seas Conventions and Action Plans – LBS/A: IGM & COP decisions
- Rio +20 commitment ‘significant reduction by 2025’
- Support initiatives at a global level:
 - Plastic Disclosure Project
 - World Society for the Protection of Animals: global workshop/campaign development
 - Micro-bead App
 - ML short paper series




Support to regional marine litter activities



- Support regional activities aiming to introduce the global partnership and the online platform through "regional nodes".
 - Support to the implementation of the HS;
 - UNEP will support and encourage develop of additional regional/national action plans or strategies to address the problem of marine litter;
 - UNEP will also seek to strengthen efforts at the national level & aim to facilitate coordination amongst stakeholder groups.

- **Support to regional activities:**
 - **Development of Regional Action Plan on ML – Mediterranean;**
 - **Compilation of best practices & networking – Northwest Pacific;**
 - **Capacity building & awareness raising, coastal communities: Panama, Chile, Ecuador, Peru, Colombia (UNEP/FAO) – Southeast Pacific;**
 - **Review of RAPMaLi & awareness raising – Wider Caribbean Region;**
 - **African Marine Debris Summit and network: West & East Africa;**

- 
- **Support to national activities (demo/pipeline):**
 - Development of National Action Plan on ML – Vietnam;
 - Development of National Action Plan on ML – Nigeria;
 - Capacity building and Awareness raising recycling – St Lucia;
 - **Demonstration of marine litter reduction strategies for Land-based sources**

Demonstration projects for reducing the inflow of solid waste into the marine environment (10 in support of HS)

- **Demo projects for reducing the inflow of solid waste into the marine environment:** including capacity building for the introduction of simple measures to reduce litter flux to coastal areas and broadening available options (BMPs and appropriate infrastructure);
- **Life cycle approach demo:** A project or program testing the life cycle approach to marine debris prevention, reduction, and management;
- **Plastics recycling demo project:** Demonstration project with a focus on plastic waste management and recycling and life cycle.
- UNEP will also work to engage interested countries and non-governmental stakeholders to develop and carry out additional, complementary projects.

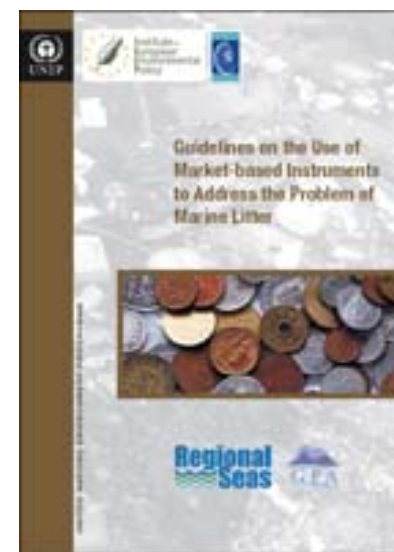
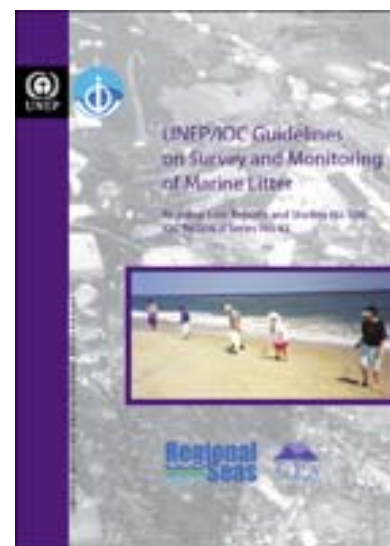
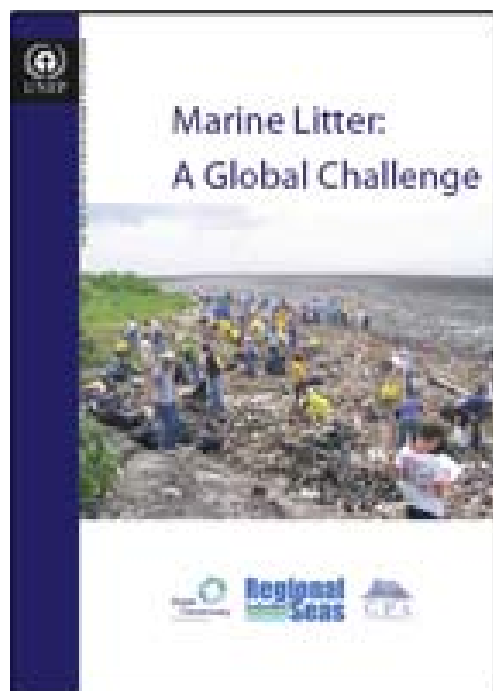


What is the role of the GPML partners in the development of demo projects?

- Bring expertise, network,
- Provide guidance during the development
- Take Rio + 20 reduction target into account
- Key partners to consider?



Thank you



www.unep.org/marinelitter

www.gpa.unep.org

www.5IMDC.org

