

The Integrated Pollution Prevention and Control Directive
IPPC Directive

**by Gürdoğar SARIGÜL
on behalf of DG ENVIRONMENT**

**European Commission Delegation to Turkey
Sector Manager for Environment and Sustainable
Development**

Istanbul, 21 October 2009



Content of the presentation

- **Current legal EU framework**
- **Implementation issues**
- **Implications for Turkey on accession**

What is an EU Directive ?

- Lays down the aims, scope and key requirements that the Member States must introduce in their national legislation
- Does not prescribe all details – many detailed issues must be determined by the Member States themselves
- Allows Member States to impose even stricter requirements

EU Industrial Emissions Legislation

Integrated Pollution Prevention and Control Directive (IPPC)

**Large Combustion
Plants Directive**

**Waste Incineration
Directive**



**VOC Solvents
Directive**

**European Pollutant Emission Register (EPER)
European Pollutant Release and Transfer Register (E-PRTR)**

Some other related legislation

- **Greenhouse Gas Emissions Trading**
- **Environmental Quality Standards (air, water)**
- **National Emission Ceilings (air)**
- **Waste management**
- **Prevention of accidents (Seveso)**

About 52.000 IPPC installations EU 27

Energy industries...

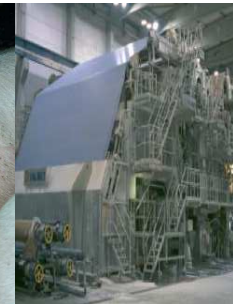
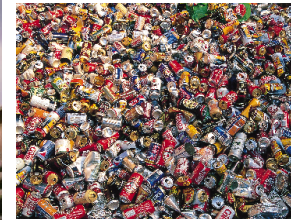
Metal Industries...

Mineral industries...

Chemical industries...

Waste management...

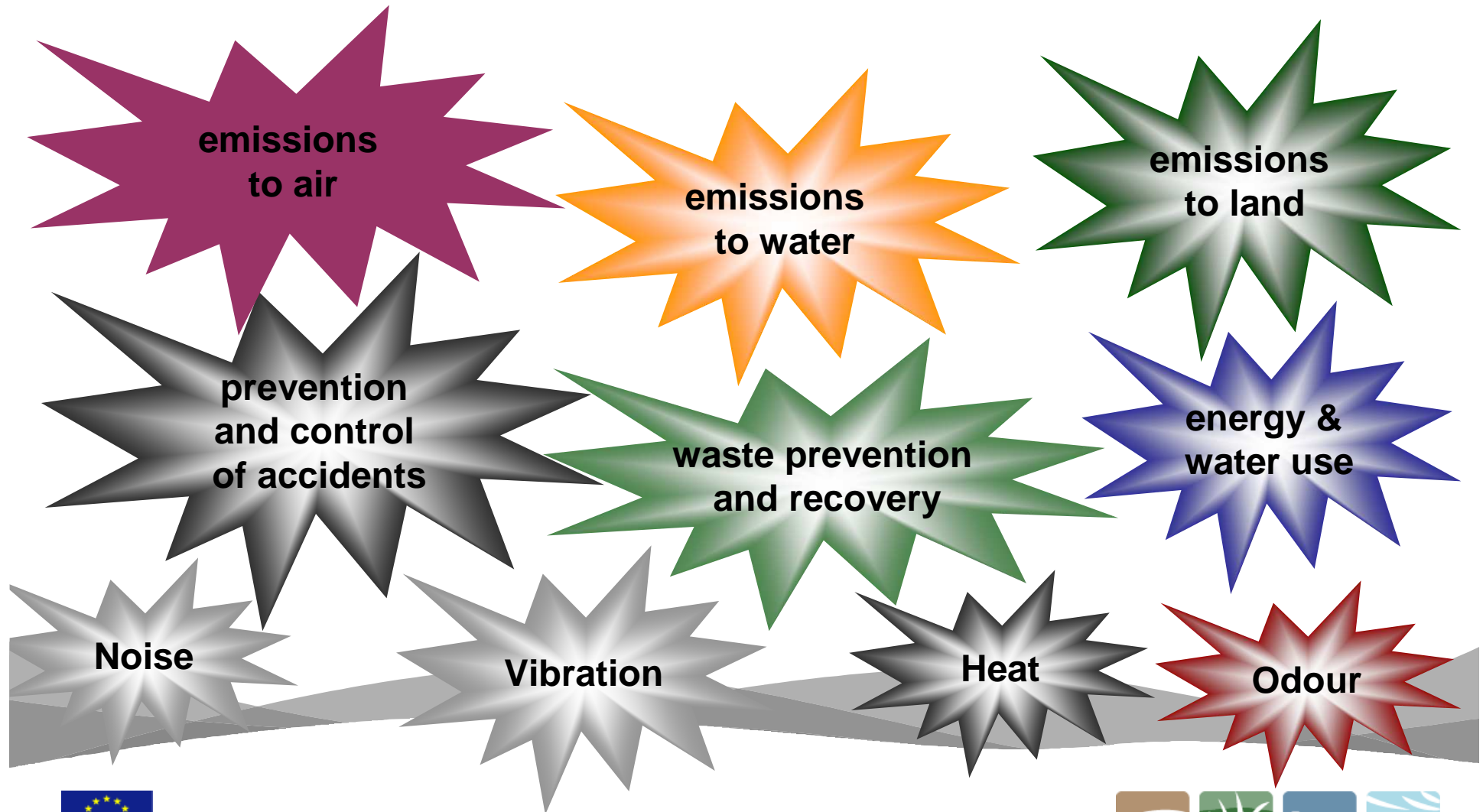
Other activities * ...



Significant proportion
of EU emissions:

- 55% CO₂
- 88% SO₂
- 36% NO_x
- 50% dust
- 55% VOC

IPPC is about Integrated Permits



IPPC is about Prevention of Pollution and implementation of Best Available Techniques

Best

most effective in achieving a **high level of protection** of the environment as a whole

Available

developed on a scale to be implemented in the relevant industrial sector, **under economically and technically viable conditions**, advantages balanced against costs

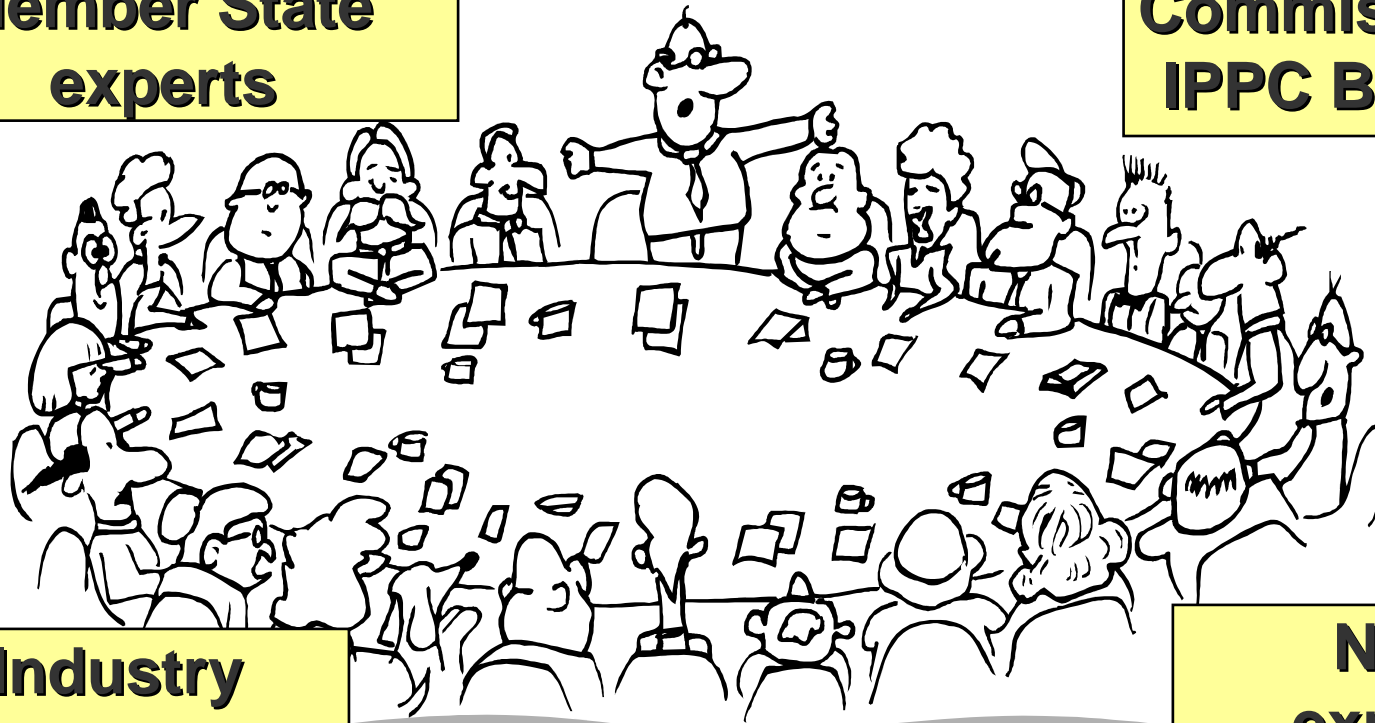
Techniques

the **technology** used *and* the way the installation is **designed, built, maintained, operated and decommissioned**

32 BAT Reference Documents (BREFs) adopted by the Commission based on an information exchange

**Member State
experts**

**European
Commission –
IPPC Bureau**



**Industry
experts**

**NGO
experts**

Role of competent authorities (national, regional or local)

- **Receive permit applications**
- **Ensure integrated approach and consult between authorities**
- **Consult the public**
- **Refuse permit or set permit conditions**
- **Monitor compliance (self-monitoring by operators and inspections by authorities)**
- **Take enforcement actions if necessary**
- **Review, update permit conditions**

From BREFs to permit conditions

- **Permit conditions must be based on BAT**
- **Certain local conditions can be taken into account**
 - technical characteristics of installations
 - geographical location
 - local environmental conditions
- **BREFs are not binding but are main reference points**
- **EU minimum requirements for certain sectors**
 - large combustion plants
 - waste (co-)incineration
 - VOC emissions from use of solvents

Implications for Turkey on accession

Turkey has developed a plan for

- **setting up necessary administrative capacities central and local level**
- **required financial resources for implementing the EU's environmental legislation. The cost of full compliance with EU for industry c. 16 billion € (COWI 2005)**

Key dates for implementation of the IPPC Directive (1) by Turkey

Determination of competent authorities	31.12.2012
Establishment of integrated permit system	31.12.2015
Ensuring coordination in case of existence of several competent authorities in the permit system	31.12.2015
Imposing the condition of Emission Limit Values based on the Best Available Techniques	31.12.2015
Establishing the procedures for public participation	31.12.2018

Key dates for implementation of the IPPC Directive (2)

Establishment of an efficient inspection and sanctions mechanism	31.12.2018
Establishment of reporting and database system in order to provide information for people and the European Commission	Upon membership
Establishment of a system for reviewing and updating of permits	31.12.2015
Full implementation	31.12.2018

Directive specific staffing requirements by institutions

		2006	2007	2008	2009	2010	2011	2012	2013	2014
national	IPPC	3	4	4	30	83	107	131	155	179
	LCP	4	7	7	8	10	11	13	15	15
	VOC	4	4	4	6	6	10	12	14	20
	WID	2	2	3	6	6	6	12	12	12
provincial	IPPC					332	355	377	400	423
	LCP				40	50	50	60	90	120
	VOC						60	80	120	160
	WID			45	55	65	65	65	65	65
										994

POSSIBLE FINANCIAL INSTRUMENTS

- **Government incentives Credit Guarantee Fund**
- **IPA Instrument for Pre-Accession**
 - ➔ Technical capacity building for the competent authorities
 - ➔ Small investment, supply of equipment
 - ➔ Under Regional Competitiveness some loans for SMEs
 - ➔ Multi-country loan programme for SMEs (EC, EIB, EBRD)

- **IFIs; EIB, World Bank, KfW, EBRD, ADF**
- **7th Framework Programme (to support innovation in the field of industrial pollution)**

THANK YOU FOR YOUR ATTENTION

For more information...

- **DG ENV industrial emissions website**
<http://ec.europa.eu/environment/air/pollutants/index.htm>
- **European IPPC Bureau (BREFs)**
<http://eippcb.jrc.es/pages/FActivities.htm>