



MED-IPPC-NET

Implementing Eco-Future

**NETWORK FOR STRENGTHENING AND
IMPROVING THE IMPLEMENTATION OF
THE IPPC DIRECTIVE IN THE
MEDITERRANEAN REGION**

**National Workshop IPPC Turkey
Istanbul, 21-22 October 09**



www.medippcnet.eu





MED-IPPC-NET
Implementing Eco-Future



CONTENTS

1. INTRODUCTION
2. PURPOSE
3. OBJECTIVES
4. PARTNERSHIP
5. WORKPLAN AND TIMETABLE
6. ACTIVITIES
7. EXPECTED RESULTS





MED-IPPC-NET
Implementing Eco-Future



1. INTRODUCTION





MED-IPPC-NET
Implementing Eco-Future



Andalusian Institute of Technology



- ✚ **Innovation and Technology Centre**
- ✚ **Non profit private foundation**
- ✚ **Recognized as being of public interest**
- ✚ **Sited in Andalusia (Spain)**
- ✚ **Created in 1989**
- ✚ **130 employees**





MED-IPPC-NET Implementing Eco-Future Studies and projects

Collaboration Agreement with the Environmental Department of the Andalusian Government



Methodology for the estimation of Emission Limit Values in the Integrated Environmental Authorizations

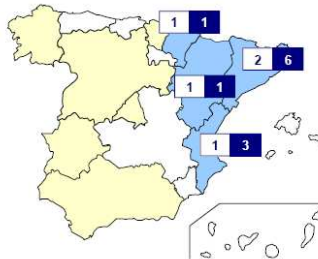


Gráfico 2.- Número de Autorizaciones Ambientales Integradas concedidas a instalaciones del sub-epígrafe 2.3 del Anexo 1 de la Ley 16/2002 en España (a 1 octubre de 2007).

Analysis and database of IPPC permits issued at national and international scope

3.1. EMISIONES ATMOSFÉRICAS

A. EMISIONES CANALIZADAS

3.1.A.1. EMISIÓN DE CONTAMINANTES Y PARÁMETROS DE PROCESO

3.1.A.1.1. Periodicidad de las inspecciones:

La periodicidad de las inspecciones será la siguiente:

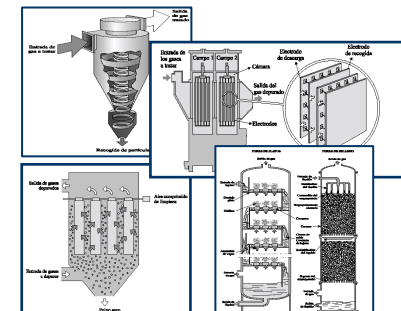
Descripción del tipo de inspección	Actuación (años)			
	Inicial	+2	+4	+6
INSPECCIÓN CON TOMA DE MUESTRAS * Inspección especial, incluyendo la preparación del cuestionario, dos visitas a la instalación de dos técnicos, elaboración de documentos y evaluación del proceso en función de las Técnicas Disponibles y de la Autorización Ambiental Integrada.	☑	☑	☑	☑

* Para la inspección con toma de muestras:

Descripción del tipo de inspección	Código	Actuación (años)			
		Inicial	+2	+4	+6
MUESTREO COMPLETO, EMISIÓN, Inspección reglamentaria en foco de emisión con muestreo isotérmico y analizador de gases, de acuerdo con la O.M. de 18 de octubre de 1976, incluyendo dietas e informe.	M tipo 2	☑	☑	☑	☑



Control and Follow-up Plans of environmental aspects in IPPC permits



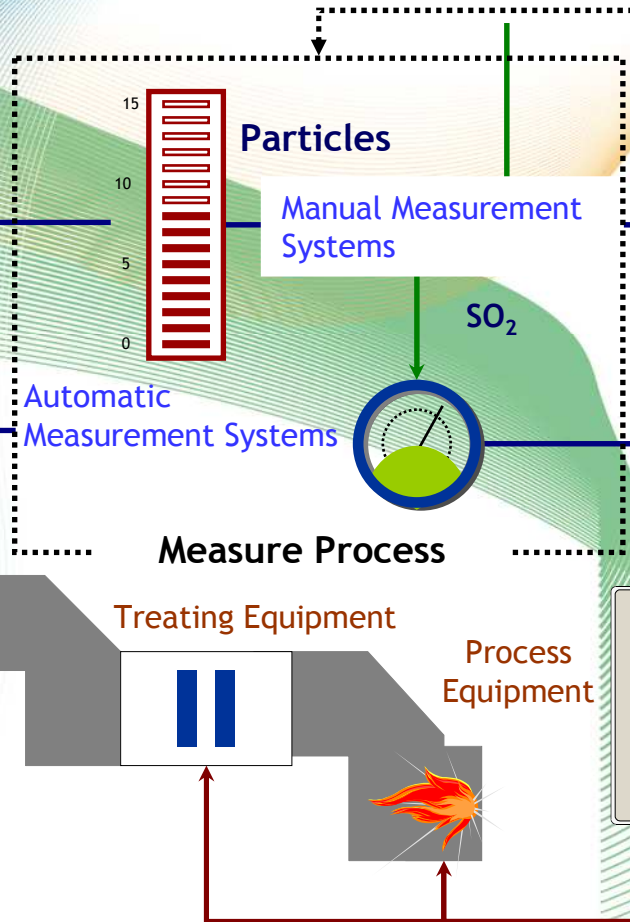
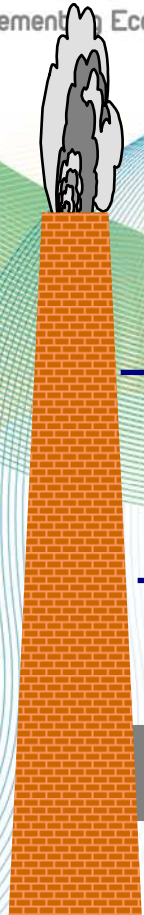
Catalogue of environmental technologies for different industrial sectors





MED-IPPC-NET

Implement Eco-Future



REQUIREMENTS

Env. Aspects	Specifications
<ul style="list-style-type: none"> Atmospheric emissions <ul style="list-style-type: none"> SO₂ Particles 	<ul style="list-style-type: none"> max. 1.500 max. 25
<ul style="list-style-type: none"> Sewage <ul style="list-style-type: none"> COD Pb 	<ul style="list-style-type: none"> max. 400 max. 1
<ul style="list-style-type: none"> Waste <ul style="list-style-type: none"> Warehouse Destination 	<ul style="list-style-type: none"> max. 6 w. manager

DIRECTIVA VALLEC DEL CONSEJO
de 24 de septiembre de 1986
relativa a la prevención y al control integrado de la contaminación

EL CONSEJO DE LA UNIÓN EUROPEA,
Visto el Tratado constitutivo de la Comunidad Europea y, en particular, el apartado 1 de su artículo 130 S;
Vista la propuesta de la Comisión;
Visto el dictamen del Comité Económico y Social;
De conformidad con el procedimiento establecido en el artículo 189 C del Tratado;

(1) Considerando que los objetivos y principios de la política comunitaria de medio ambiente, con especial referencia al artículo 130 B del Tratado, se refieren, en particular, a la prevención, la reducción y, en la medida de lo posible, la eliminación de la contaminación, actuando preferentemente en la fuente misma, y a garantizar una gestión ordenada de los recursos naturales, de conformidad con los principios de que "quien contamina paga" y de la prevención de la contaminación;

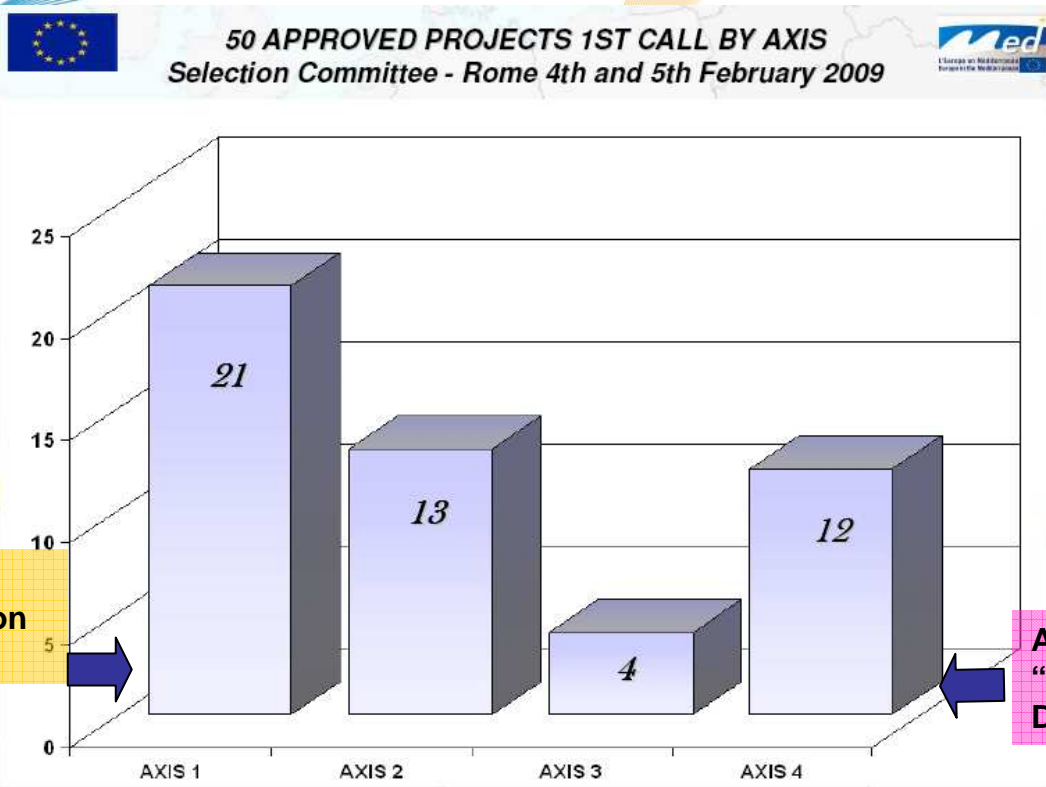
(2) Considerando que el Cuarto Programa Comunitario de Medio Ambiente, cuyo plan maestro general que adoptó por el Consejo y los representantes de los gobiernos de los Estados miembros miembros en el seno del Consejo en su Resolución de 1 de febrero de 1985, deli, concreta prioritaro el control integrado de la contaminación, ya que constituye un elemento esencial de la política;

(3) Considerando que la puesta en práctica de un enfoque integrado para disminuir la contaminación exige una actuación a nivel comunitario, a fin de reducir y completar la actual legislación comunitaria sobre la prevención y el control de la contaminación procedente de las instalaciones industriales;

(4) Considerando que la Directiva 84/360/CEE del Consejo, de 24 de junio de 1984, relativa a la lucha contra la contaminación atmosférica procedente de las instalaciones industriales, establece un marco general en virtud del cual se requiere una autorización previa para la explotación de las instalaciones industriales que produzcan contaminación atmosférica, y, sin embargo, en caso de que la licencia o el certificado de autorización de dichas instalaciones;

Directive IPPC





AXIS 1
"Strengthening Innovation Capacities"

AXIS 4
"Sustainable Urban Development"

AXIS 2
"Environmental Protection and Promotion of a Sustainable Territorial Development"

AXIS 3
"Improvement of Mobility and of territorial Accesibility"



MED-IPPC-NET
Implementing Eco-Future



2. PURPOSE





MED-IPPC-NET
Implementing Eco-Future



Strengthening and improving the implementation of the IPPC Directive 96/61/EC within the Mediterranean space, in order to establish a set of common criteria and support a good transposition of the Directive into the candidates legal frameworks.





MED-IPPC-NET
Implementing Eco-Future



3. OBJECTIVES





MED-IPPC-NET
Implementing Eco-Future



GENERAL:

- Promote a sustainable regional development through the protection and enhancement of MED natural resources.
- Ensure the coordination, coherence and implementation of public policies regarding environmental aspects within the Mediterranean industry.

SPECIFIC:

- Create a network in order to favour the transfer of knowledge, experience and application of procedures and methodologies.
- Elaborate a common methodology for the implementation of the IPPC in the MED area.
- Support and promote the implementation of the European IPPC Directives.



MED-IPPC-NET
Implementing Eco-Future



4. PARTNERSHIP





MED-IPPC-NET
Implementing Eco-Future



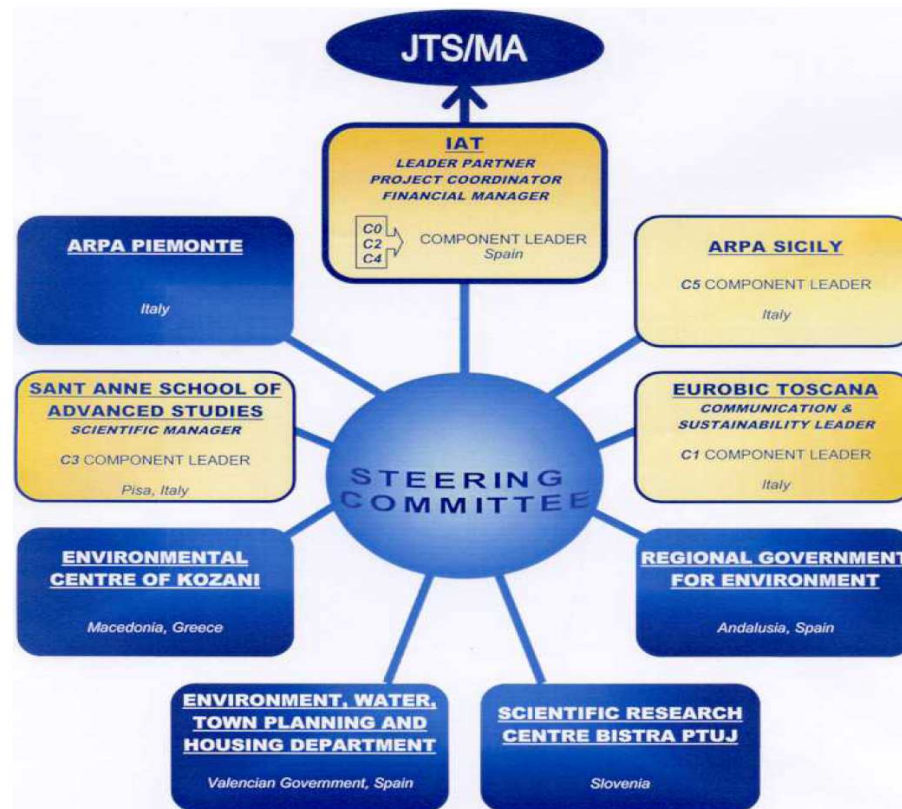
1. **Andalusian Institute of Technology (IAT) (Andalucía, ES).**
2. **ARPA Sicily (Sicilia, IT).**
3. **EUROBIC Toscana SUD (Toscana, IT).**
4. **Regional Government for Environment (Andalucía, ES).**
5. **Scientific Research Centre Bistra Ptuj (Slovenija, SL).**
6. **Environment, Water, Town Planning and House Department of Valencian Government (Comunidad Valenciana, ES).**
7. **Environmental Centre of Kozani (Dytiki, Makedonia, GR).**
8. **Santa Anne School of Advanced Studies (Pisa, Toscana, IT).**
9. **ARPA Piemonte (Piemonte, IT).**





MED-IPPC-NET

Implementing Eco-Future





MED-IPPC-NET
Implementing Eco-Future



5. WORK PLAN AND TIMETABLE

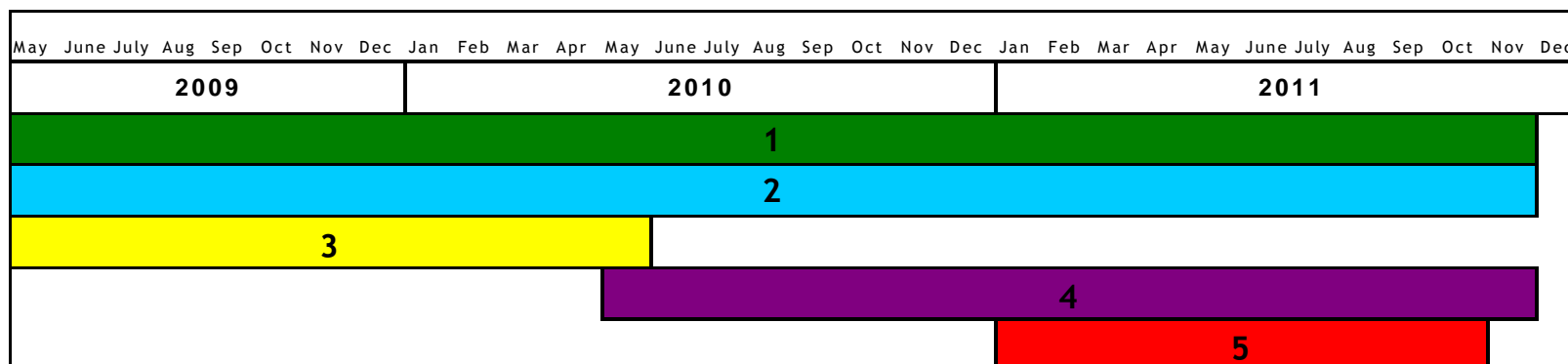




MED-IPPC-NET
Implementing Eco-Future



1. INFORMATION, COMMUNICATION AND CAPITALISATION MEASURES (Eurobic Toscana SUD)
2. MANAGEMENT AND COORDINATION OF THE PROJECT (IAT)
3. IDENTIFICATION AND ANALYSIS OF THE PROCEDURE AND LEVEL OF IMPLEMENTATION OF THE IPPC DIRECTIVES (S.Anna School of Advanced Studies)
4. DESIGN OF A COMMON METHODOLOGY (GUIDELINES) FOR THE IMPLEMENTATION OF THE IPPC DIRECTIVES (IAT)
5. VALIDATION OF THE JOINT METHODOLOGY IN AN INDUSTRIAL SECTOR (ARPA Sicily)





MED-IPPC-NET
Implementing Eco-Future



6. ACTIVITIES





MED-IPPC-NET
Implementing Eco-Future



COMPONENT 1.- INFORMATION, COMMUNICATION AND CAPITALISATION MEASURES.

Activities within this component will foster the **dissemination and exploitation of both tangible and intangible results** of the project with the aim of optimising the value of the obtained results, reinforce their impact and facilitate their integration within the **local, regional, national and international scope.**

Activities:

- Web site: www.medippcnet.eu.
- Regional workshops with the industrial actors.
- National and International conferences.
- Press releases, Articles & Newsletters.
- MED-IPPC-Network Expansion: Interregional **Bilateral Meetings.**



MED-IPPC-NET
Implementing Eco-Future



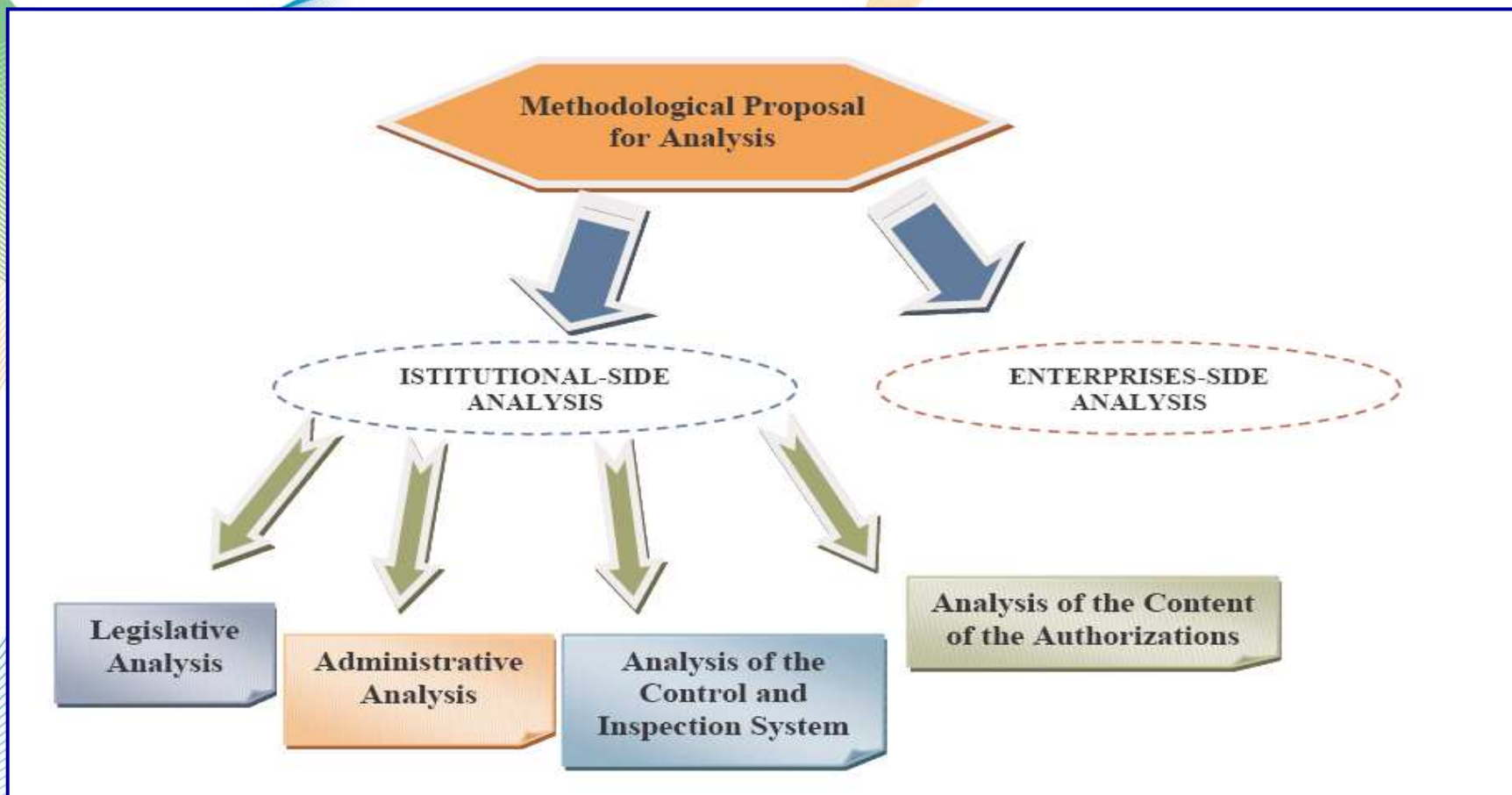
COMPONENT 3. - IDENTIFICATION AND ANALYSIS OF THE PROCEDURE AND LEVEL OF IMPLEMENTATION OF IPPC DIRECTIVES

Activities within this component aims at carrying out an **interregional comparative analysis** on the procedure and implementation level of the IPPC in aspects relating to the **legislative and administrative procedure** for the concession of Integrated Permits and to **their specific content (including control and inspections conditions)**.





MED-IPPC-NET
Implementing Eco-Future





MED-IPPC-NET
Implementing Eco-Future



COMPONENT 3.- IDENTIFICATION AND ANALYSIS OF THE PROCEDURE AND LEVEL OF IMPLEMENTATION OF IPPC DIRECTIVES

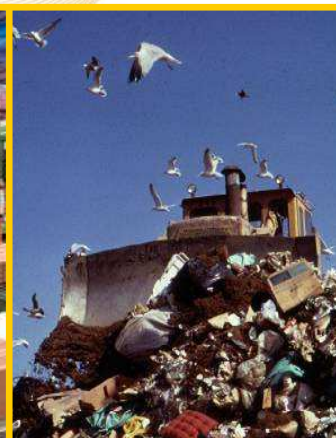
The analysis will be carried out in the **5 most representative industrial sectors** within the target regions.



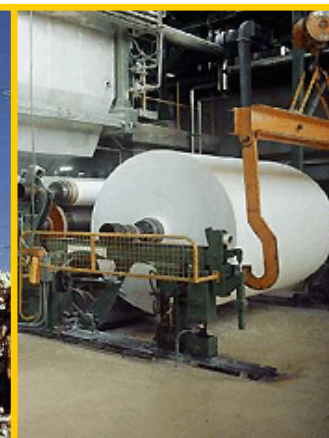
1.1.
**Combustion
installations**



3.5.
**Ceramic
Industry**



5.4.
Landfills



6.1.
**Pulp and
Paper Industry**



2.6.
**Surface
treatment**

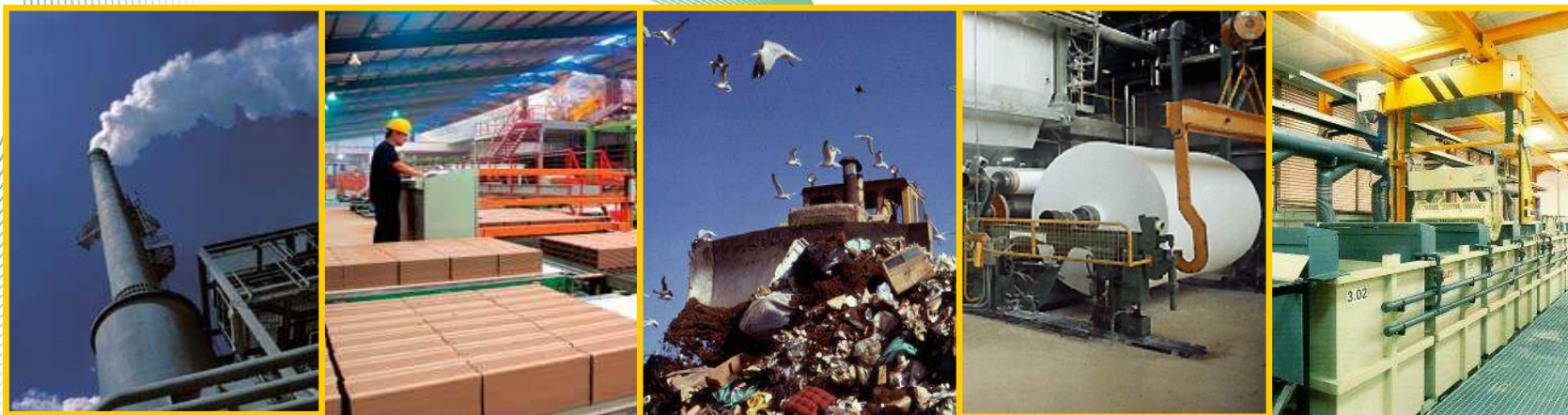
COMPONENT 3 - Analysis

WHY THESE SECTORS?

Two main criteria:

- 1) Number of facilities
- 2) Number of IEAs

IPPC DIRECTIVE CATEGORIES	TOTAL n. of regions
1.1.	4
1.2.	1
2.6.	2
3.1.	2
3.5.	4
5.4.	5
6.1.	2
6.2.	2
6.4. (a)	1
6.6. (a)	2
6.6. (b)	2
6.6. (c)	1
TOTAL	28





MED-IPPC-NET
Implementing Eco-Future



COMPONENT 4. - DESIGN AND DEVELOPMENT OF A COMMON METHODOLOGY (GUIDELINES) FOR THE IMPLEMENTATION OF THE IPPC DIRECTIVES

Conclusions of the analysis of the implementation of the IPPC in the MED Area will be the basis to design and develop a **Common Methodology** for the Implementation of the IPPC Directives.

In spite of the sectorial character of the Analysis of previous stage, the Methodology will be designed with a **global approach**, ensuring thus its usefulness in *any* industrial sector of those affected by the IPPC Directives.



MED-IPPC-NET
Implementing Eco-Future



COMPONENT 5.- PILOT PROJECT FOR THE VALIDATION OF THE COMMON METHODOLOGY FOR THE IMPLEMENTATION OF THE IPPC DIRECTIVES

MED-IPPC-NET partners will develop a **pilot project for the application and validation of the Common Methodology designed in one industrial sector (10 companies)** affected by the IPPC **in each partner region**. The aim of this component is to test the common methodology and check its adequacy to be used for the purpose it was designed for.

The results of this validation project will constitute the inputs for the improvement of the Methodology, closing this way the Plan-Do-Check-Act cycle (permanent improvement process).





MED-IPPC-NET
Implementing Eco-Future



7. EXPECTED RESULTS



- **State of the art of the implementation of the IPPC Directive** at Regional and Interregional level in the most representative industrial sectors in the Mediterranean area.
- **Methodology with common criteria** (best practices) **for the implementation of the IPPC Directive** within the Mediterranean area.
- **MEDITERRANEAN NETWORK** for:
 - the strengthening and improving the implementation of the IPPC Directive in the EU countries.
 - Support the transfer of EU integrated prevention and control policies in non-EU countries



MED-IPPC-NET
Implementing Eco-Future



**ARE YOU
INTERESTED
IN THE PROJECT?
COME & JOIN US!!**

www.medippcnet.eu





MED-IPPC-NET
Implementing Eco-Future



THANK YOU FOR YOUR ATTENTION!



■ **Innovación y Tecnología**

**International Programmes Department &
Department of Management Technologies**

iraya@iat.es

vlvazquez@iat.es

Tfno. 95 446 80 10

Fax: 95 446 04 07

<http://www.iat.es>

c/Leonardo da Vinci 2

Isla de La Cartuja

41092 Sevilla

